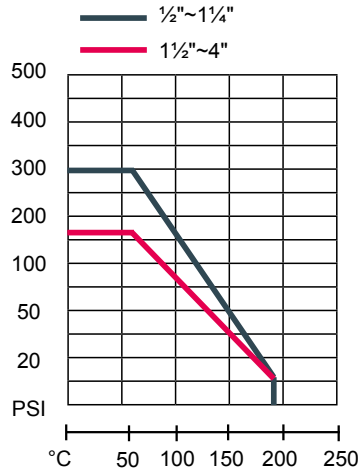


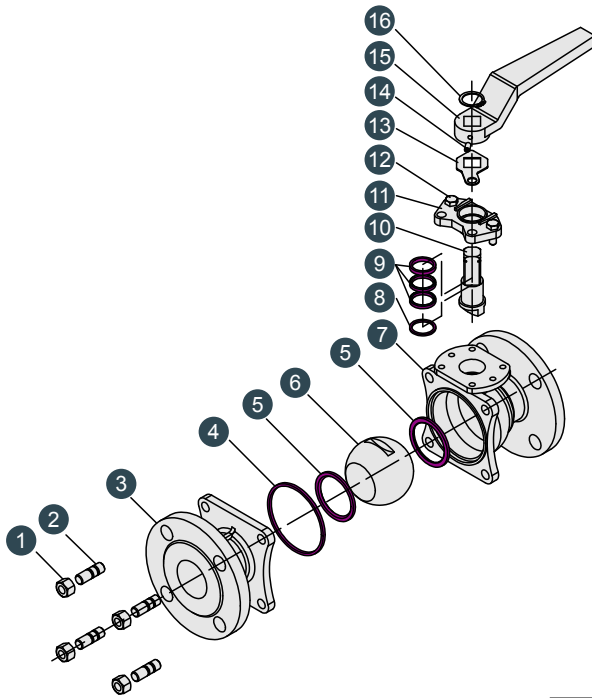
**STANDARD:**

- Investment Casting Body & Cap
- Blow-Out Proof Stem
- Full Port 2-PC Design JIS 10K
- ISO Mounting Pad Top Flange
- Pressure Blance Hole in Ball Solt(as request)
- Locking Device Handle Available
- Fire-Safe Design Available
- Design Standard:ASME B16.34
- Wall Thickness:ASME B16.34,GB 12224
- Flange Standard:JIS B2220
- Several Handle Material Available
- Inspection Standard:API598

Pressure Temperature Compare



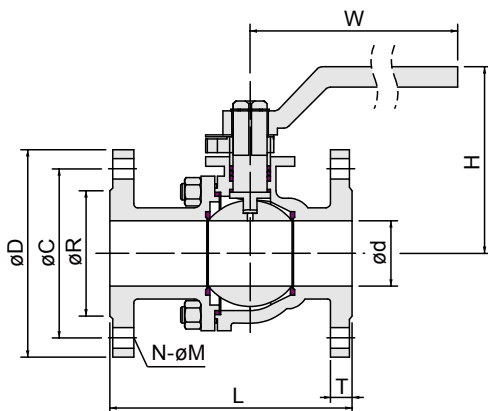
Technical Data			
Test Pressure	Shell Test	9.0	MPA
	Tightness Test	7.50	
	Gas-Tightness Test	0.8	
Max Working Temperature		-20°C~+160°C	
Applicable Medium:Water,Oil,Gas,Acid			



No.	PARTS	MATERIAL		
1	Nut	A194-8		
2	Bolt	A193-B8		
3	Cap	CF8M	CF8	WCB
4	Gasket	PTFE	R-PTFE	
5	Ball Seat	PTFE	R-PTFE	
6	Ball	SS316	SS304	
7	Body	CF8M	CF8	WCB
8	Thrust Washer	PTFE	R-PTFE	
9	V-Ring Packing	PTFE	R-PTFE	
10	Stem	SS316	SS304	
11	Gland	CF8	SS201	
12	Bolt	A193-B8		
13	Position Washer	SS201		
14	Bolt	A193-B8		
15	Handle	SS304	SS201	
16	Stop Washer	SS201		

PPL & PEEK High temperature ball seat available

Unit:mm



SIZE	d	L	H	W	R	C	D	N	M	T	TORQUE N.M
1/2"	15	110	78	145	51	70	95	4	15	12	6
3/4"	20	120	80	145	56	75	100	4	15	14	8
1"	25	130	88	145	67	90	125	4	19	14	10
1 1/4"	32	140	100	180	76	100	135	4	19	16	17
1 1/2"	38	165	123	240	81	105	140	4	19	16	22
2"	48	180	130	240	96	120	155	4	19	16	30
2 1/2"	65	190	150	240	116	140	175	4	19	18	45
3"	78	200	165	300	126	150	185	8	19	18	80
4"	98	230	185	300	151	175	210	8	19	18	115