

STANDARD:

- Investment Casting Body & Cap
- Blow-Out Proof Stem
- Full Port 3-PC Design
- ISO Direct Mounting Pad Top Flange
- Anti-Static Device
- Self-Adjustment Stem Packing
- Pressure Blance Hole in Ball Solt(as request)
- Locking Device Handle Available
- Design Standard:ASME B16.34
- Wall Thickness:ASME B16.34,GB 12224
- Several Handle Material Available
- All Kind of Screws Available
- Inspection Standard:API598

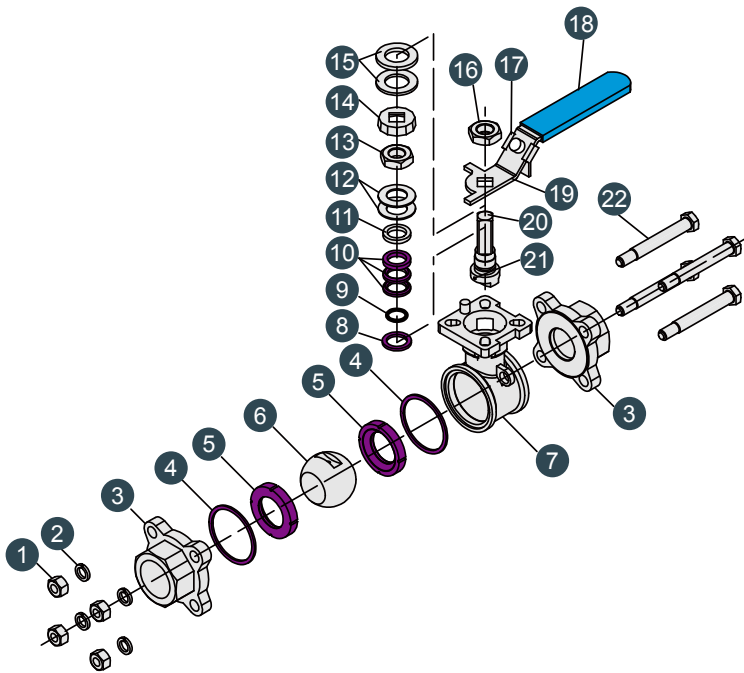
Pressure Temperature Compare



MB3040

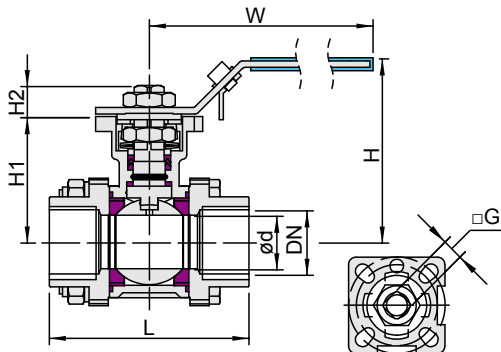


| Technical Data | | | |
|--------------------------------------|--------------------|--------------|-----|
| Test Pressure | Shell Test | 10.0 | MPA |
| | Tightness Test | 7.50 | |
| | Gas-Tightness Test | 0.8 | |
| Max Working temperature | | -20°C~+160°C | |
| Applicable Medium:Water,Oil,Gas,Acid | | | |



| No. | PARTS | MATERIAL | |
|-----|--------------------|----------|---------|
| 1 | Nut | A194-8 | |
| 2 | Spring Washer | SS304 | SS201 |
| 3 | Cap | CF8M | CF8 WCB |
| 4 | Gasket | PTFE | R-PTFE |
| 5 | Ball Seat | PTFE | R-PTFE |
| 6 | Ball | SS316 | SS304 |
| 7 | Body | CF8M | CF8 WCB |
| 8 | Thrust Washer | PTFE | R-PTFE |
| 9 | O-Ring | VITON | |
| 10 | V-Ring Packing | PTFE | R-PTFE |
| 11 | Gland | SS304 | |
| 12 | Spring Washer | SS301 | |
| 13 | Stop Nut | SS304 | SS201 |
| 14 | Stop Washer | SS201 | |
| 15 | Gland | SS304 | SS201 |
| 16 | Stem Nut | A194-8 | |
| 17 | Locking Device | SS304 | SS201 |
| 18 | Handle Cover | Plstic | |
| 19 | Handle | SS304 | SS201 |
| 20 | Stem | SS316 | SS304 |
| 21 | Anti-Static Device | SS316 | SS304 |
| 22 | Bolt | A193-B8 | |

Unit:mm



| SIZE | d | L | H | H1 | H2 | W | G | ISO | TORQUE N.M |
|--------|----|-----|-----|-----|----|-----|----|--------|------------|
| 1/2" | 15 | 75 | 72 | 40 | 7 | 105 | 9 | F03/04 | 5 |
| 3/4" | 20 | 80 | 82 | 50 | 9 | 105 | 9 | F03/04 | 8 |
| 1" | 25 | 90 | 91 | 57 | 11 | 140 | 11 | F04/05 | 11 |
| 1 1/4" | 32 | 105 | 96 | 62 | 11 | 140 | 11 | F04/05 | 15 |
| 1 1/2" | 38 | 115 | 106 | 77 | 14 | 170 | 14 | F05/07 | 22 |
| 2" | 48 | 135 | 115 | 85 | 14 | 170 | 14 | F05/07 | 26 |
| 2 1/2" | 65 | 180 | 176 | 102 | 16 | 240 | 17 | F07/10 | 48 |
| 3" | 78 | 200 | 185 | 113 | 16 | 240 | 17 | F07/10 | 80 |
| 4" | 98 | 235 | 210 | 131 | 17 | 300 | 19 | F07/10 | 110 |