

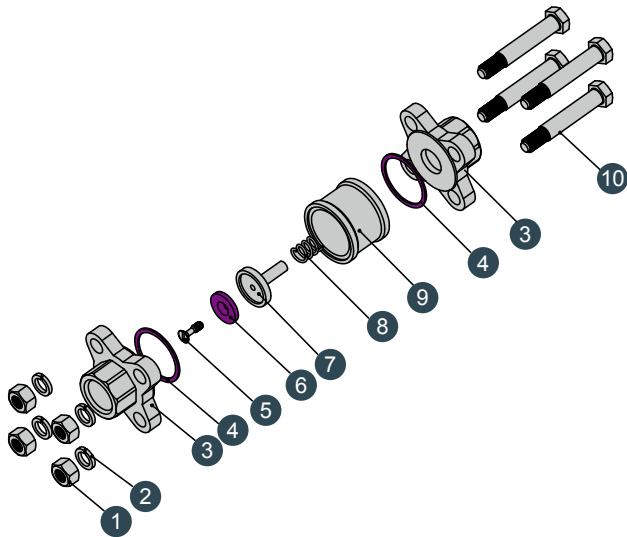
**STANDARD:**

- Investment Casting Body & Cap
- 800PSI PN40
- 3-PC Design Full Port
- All Kind of Thread Standard Available
- Design Standard:ASME B16.34
- Inspection Standard:API598

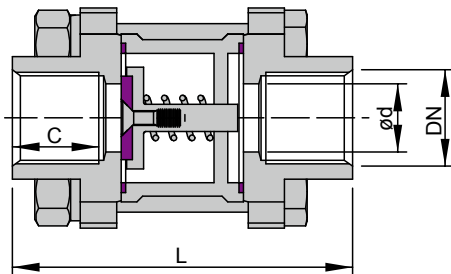
Technical Data			
Test Pressure	Shell Test	3.0	MPA
	Tightness Test	3.5	
	Gas-Tightness Test	0.8	
Max Working temperature		-40°C~+250°C	
Applicable Medium:Water,Oil,Gas,Acid			



**MC1040**



No.	PART NAME	MATERIAL	
1	Nut	SS304	SS201
2	Spring Washer	SS304	SS201
3	Cap	CF8M	CF8
4	Gasket	PTFE	
5	Bolt	SS316	SS304
6	Seat	PTFE	PTFE+VITON
7	Disc	SS316	SS304
8	Spring	SS316	SS304
9	Body	CF8M	CF8
10	Bolt	A193-7	



Unit:mm

SIZE	d	DN	L	C	Thread
1/2"	15	1/2"	62	14	BSP BSPT DIN2999 DIN259 ISO G
3/4"	20	3/4"	70	15	
1"	25	1"	80	17	
1 1/4"	32	1 1/4"	92	19	
1 1/2"	38	1 1/2"	105	20	
2"	50	2"	123	23	
2 1/2"	65	2 1/2"	162	28	
3"	78	3"	180	30	
4"	98	4"	225	34	